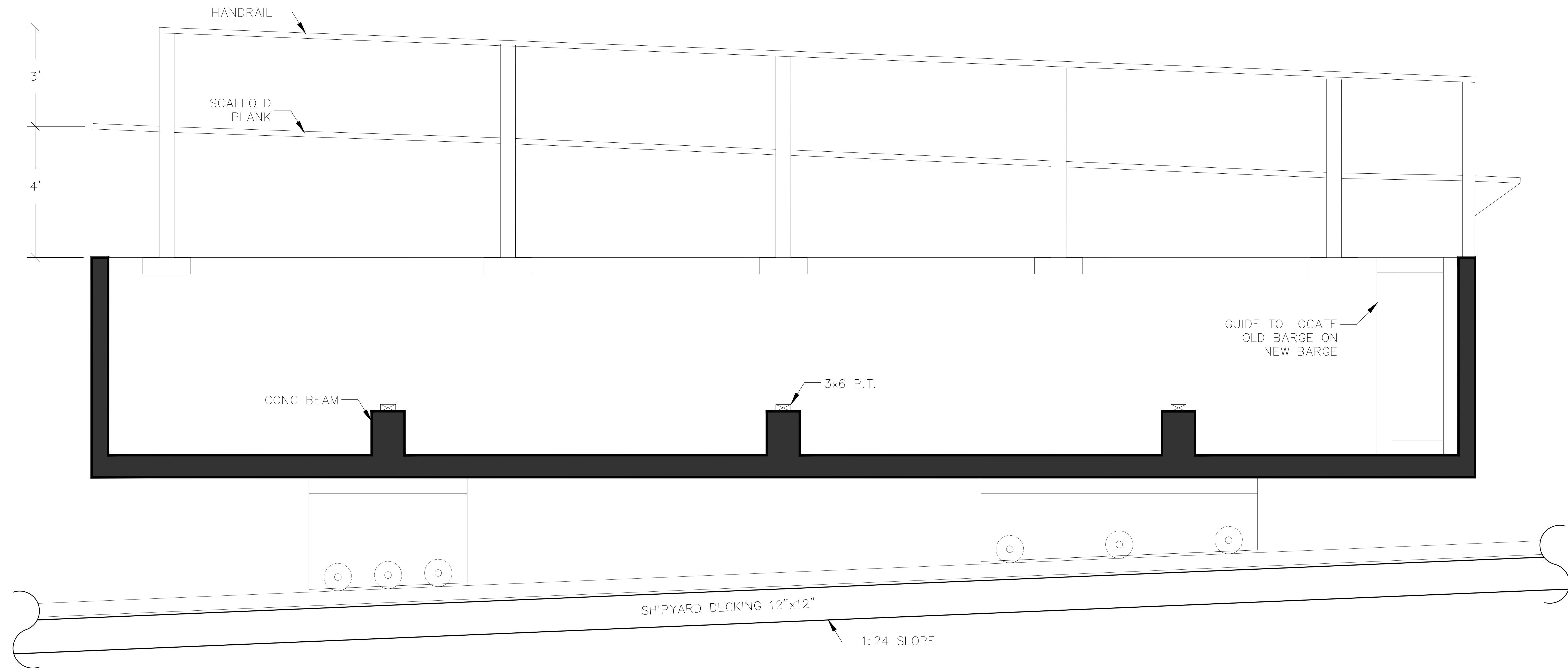


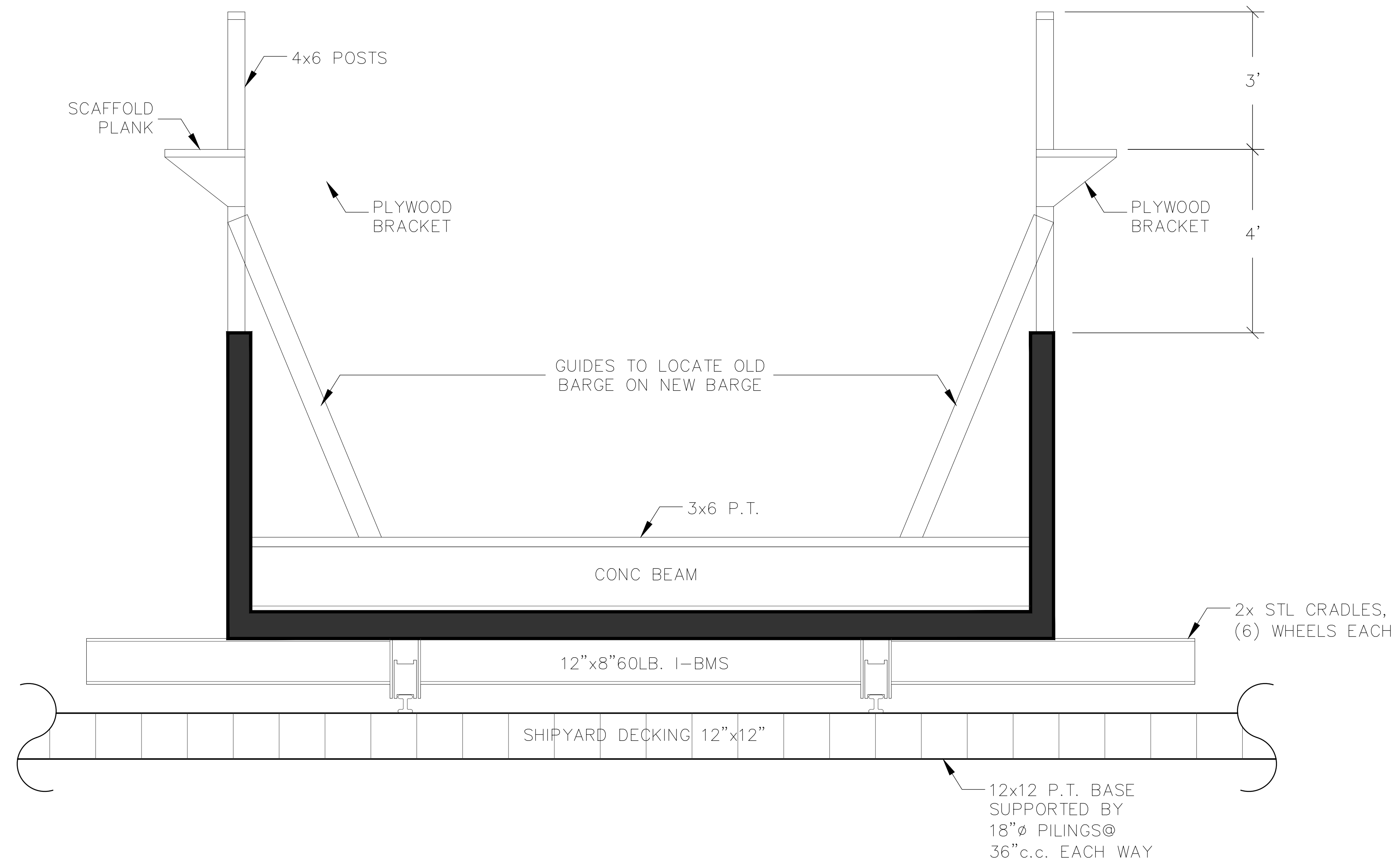
BARGE FLOAT ON TRANSFER PROCEDURE

1:24 SLOPE SO SCAFFOLD IS
LEVEL WHEN BARGE IS SUBMERGED
ON 1:24 SLOPED SHIPYARD DECK



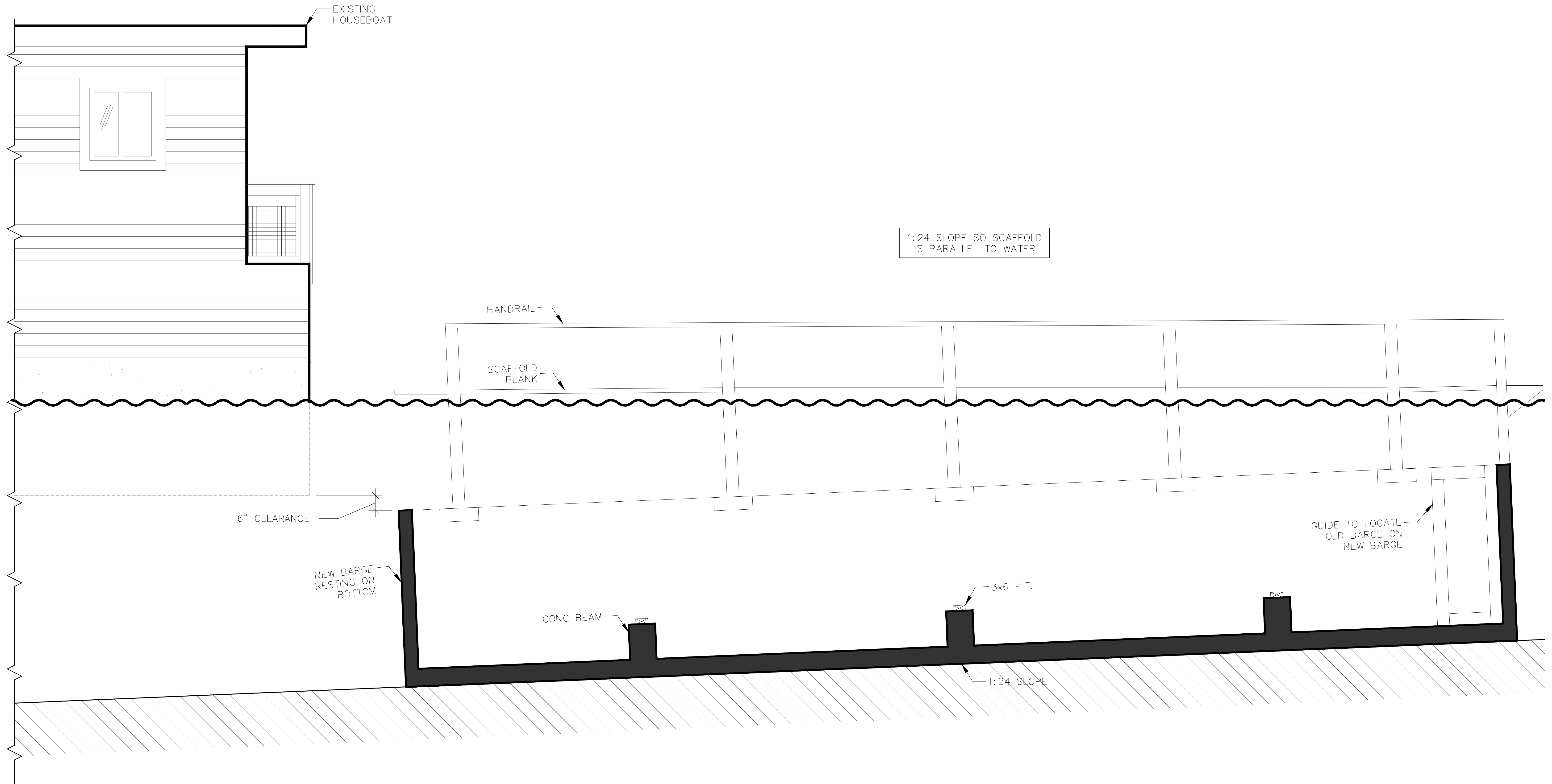
NEW BARGE ON LAUNCHING CRADLE

LONGITUDINAL SECTION



NEW BARGE PRIOR TO LAUNCH, RESTING ON STEEL CRADLES ON TRACKS GOING TO DEEPER WATER. LAUNCH DONE AT MAX. HIGH TIDE.

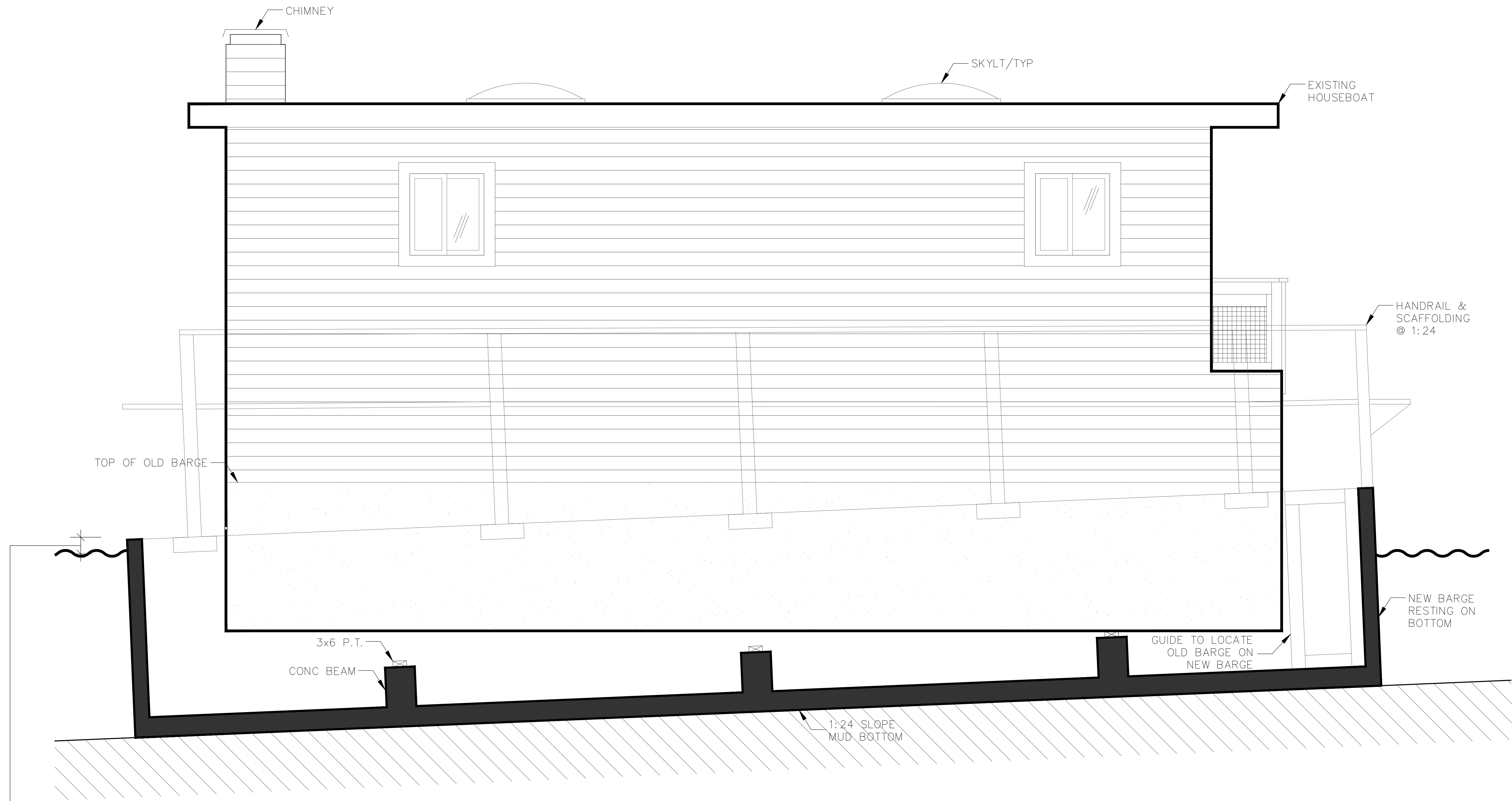
TRANSVERSE SECTION



HOUSEBOAT APPROACHING SUBMERGED BARGE

LONGITUDINAL SECTION

WHEN TIDE DROPS TO BELOW THE TOP OF THE NEW BARGE, PUMPS ARE STARTED TO EVACUATE ALL WATER FROM NEW BARGE.

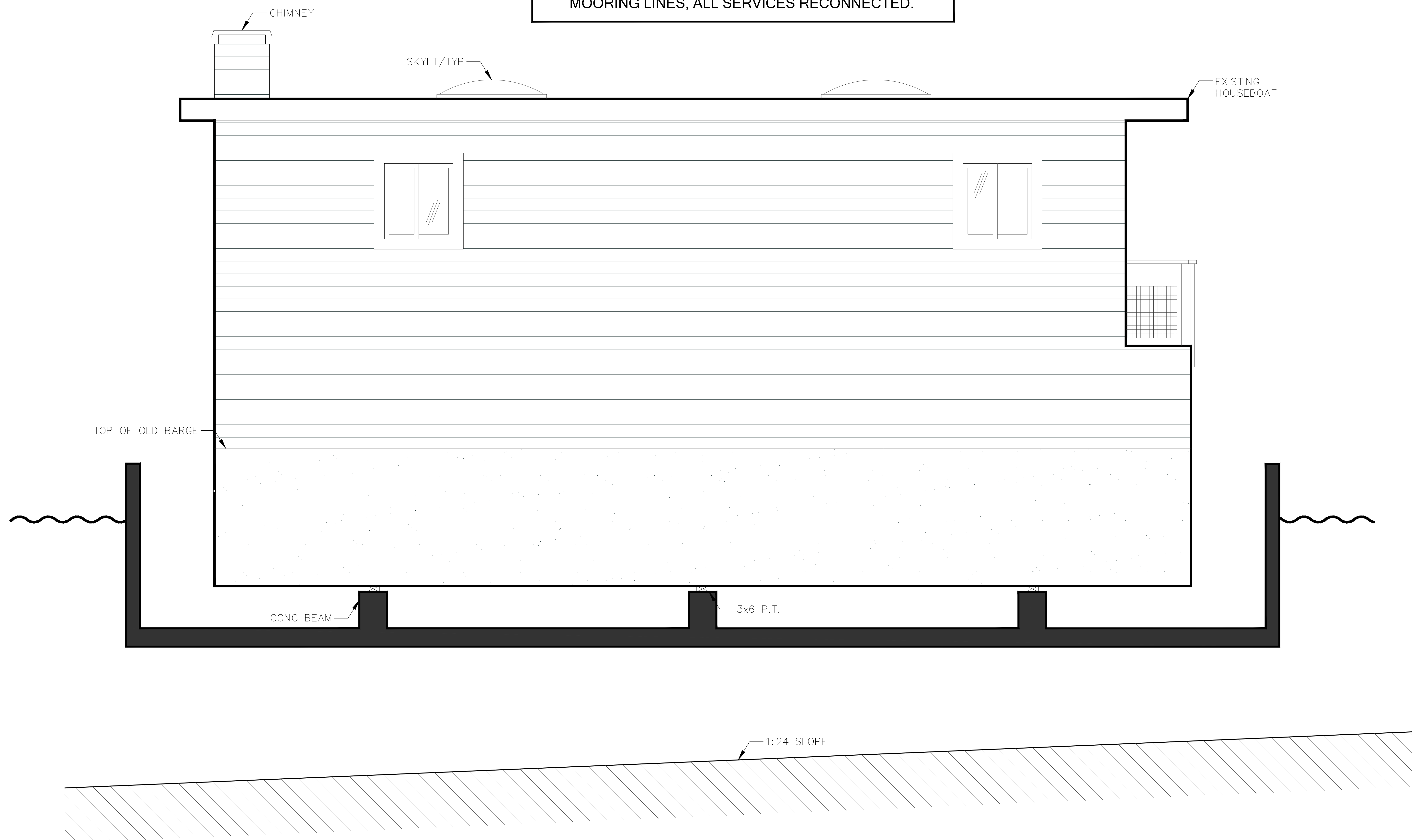


START PUMPS AS SOON AS WATERLINE FALLS BELOW TOP OF NEW BARGE WALL AT LOWEST END.

HOUSEBOAT NOT YET FULLY LANDED ON SUPPORTS, PUMPS STARTED

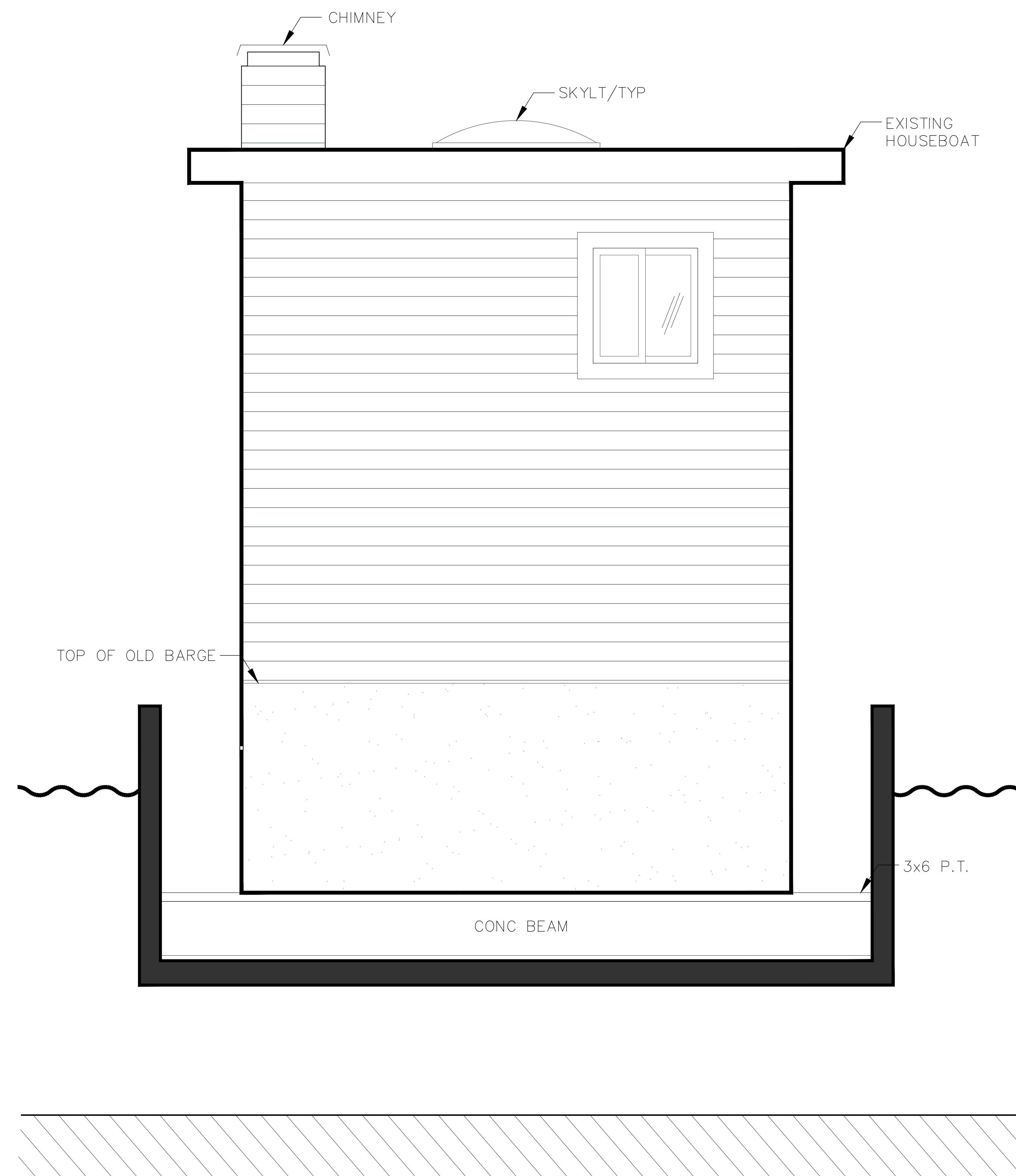
LONGITUDINAL SECTION

AFTER ALL WATER IS EVACUATED FROM NEW BARGE AND TIDE RISES, FLOATING TRANSFERRED HOUSEBOAT, SCAFFOLDING REMOVED, THE HOUSEBOAT TOWED BACK TO IT'S BERTH AND PROPERLY ATTACHED WITH MOORING LINES, ALL SERVICES RECONNECTED.



**EXISTING HOUSEBOAT
AFLOAT ON NEW BARGE**
LONGITUDINAL SECTION

AFTER ALL WATER IS EVACUATED FROM NEW BARGE AND TIDE RISES, FLOATING TRANSFERRED HOUSEBOAT, SCAFFOLDING REMOVED, THE HOUSEBOAT TOWED BACK TO IT'S BERTH AND PROPERLY ATTACHED WITH MOORING LINES, ALL SERVICES RECONNECTED.



**EXISTING HOUSEBOAT
AFLOAT ON NEW BARGE**
TRANSVERSE SECTION